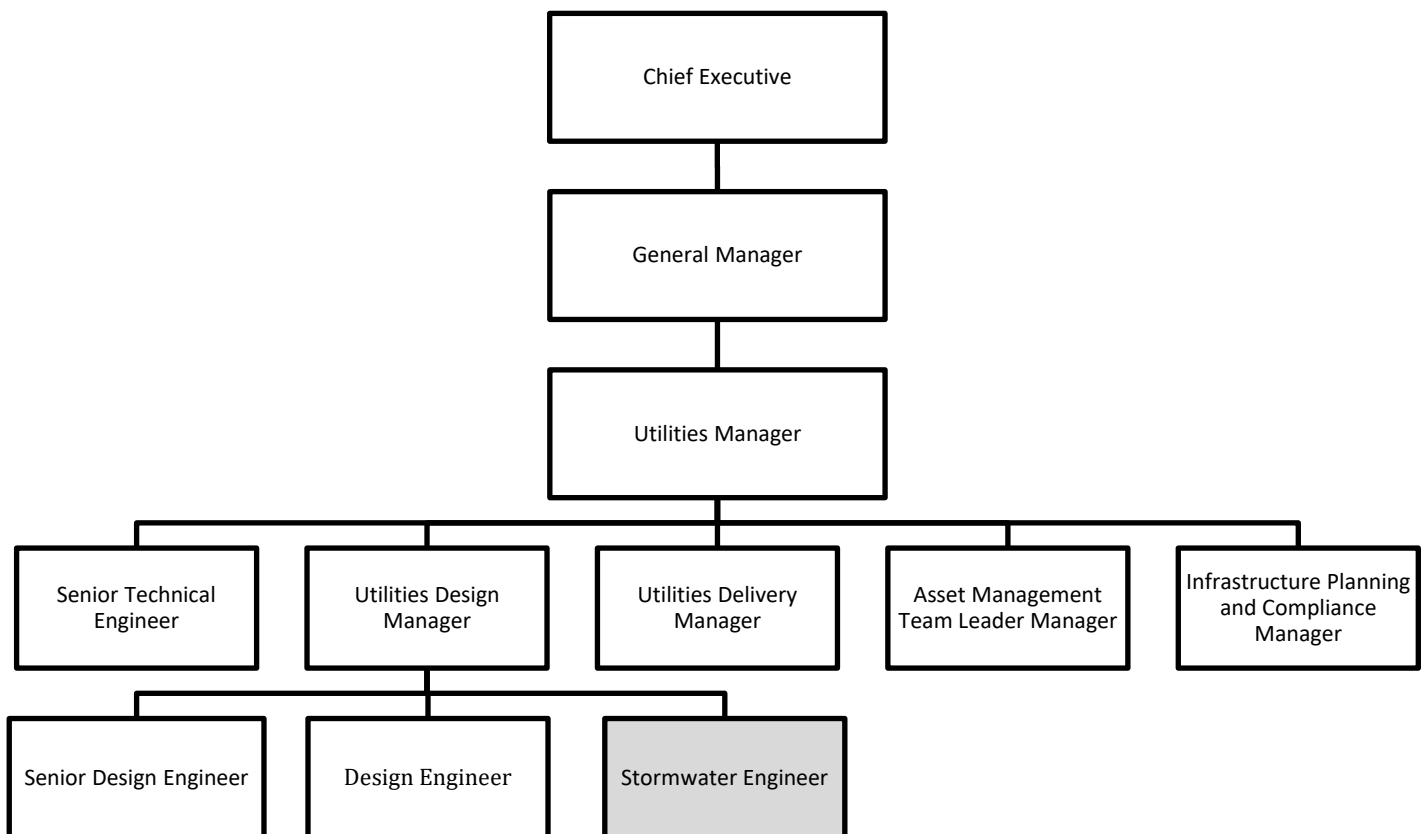


JOB PROFILE

Job title	Stormwater Engineer
Area	Infrastructure
Reporting line	Utilities Design Manager
Staff responsibilities	None
Job purpose	As the Stormwater Engineer, you will be experienced in the Three Waters stormwater activity, provide technical recommendations for land development engineering, infrastructure projects and long term planning. There is also an opportunity to get involved in a variety of stormwater projects.

Location Feilding

Reporting relationship



About us

Here at the Manawātū District Council, we strive to be a successful, future-oriented organisation providing services that benefit our communities to support a connected, vibrant and thriving Manawātū. Kia papa te tū, kia rangi te tiro. This whakataukī (proverb) describes our connection to our proudly rural roots, our beautiful town, villages and countryside, and describes our aspirations for our community.

The role

Manawatu District has been impacted significantly over the last several years due to large scale rain events. We are undertaking stormwater modelling across a number of areas impacted by flooding with the aim of undertaking capital improvements in Feilding and villages to address these issues. The role will include leading liaison with technical external leads or the opportunity to undertake this work in house.

The role will also include providing technical recommendations for land development engineering, infrastructure projects and long term planning and include the following:

Technical Recommendations for Land Development

- Assess and provide recommendations on land development projects to ensure they align with infrastructure and environmental requirements.
- Offer solutions for potential problems such as stormwater runoff, and flood risks.

Infrastructure Planning & Evaluation

- Evaluate the long-term infrastructure needs of a development project, including roads, utilities, and drainage systems.
- Work with stakeholders (planners, developers, local authorities) to integrate infrastructure plans with land-use strategies.

Flooding and Stormwater Management

- Investigate flooding risks in proposed developments, including reviewing topographical data, hydrological patterns, and historical flood information.
- Liaison with external consultants engaged to deliver stormwater modelling, design briefs, concepts or detailed designs.
- Propose and design solutions to manage stormwater LOS, reduce flood risks, and improve water quality.

Hydrologic and Hydraulic Modelling

- Use hydrological models to simulate and predict the flow of water through the proposed development site, considering rainfall, runoff, and other variables.
- Assess the capacity and performance of existing stormwater infrastructure, making recommendations for upgrades or improvements.

Key relationships

- All staff of the organisation
- Other local authorities
- Regional Council (Horizons)
- Central Government (Ministry of Environment)
- Contractors
- Mana Whenua, Kaitiaki, Hapu and iwi representatives
- Members of the public

Key responsibilities

Operational

- Develop comprehensive plans for stormwater systems to meet the current and future needs of our community.
- Interpret and assess technical advice provided by external consultants across a number of areas within the Utilities team.
- Utilise advanced modelling techniques to predict and manage water flow, quality, and distribution.
- To undertake stormwater catchment and flow calculations
- Undertake flood risk assessment reports, both for the purpose of assessing development feasibility and also for supporting Resource Consent applications.
- Stormwater option assessments, concept development through to detailed design

- Carry out investigations and design solutions to flooding and stormwater issues.
- Evaluate the impacts of new developments and provide feedback and recommendations.
- Respond to immediate flooding and stormwater issues and contribute to the planning for and management of flood events.
- Assist in drainage investigations, data collection, development and conceptual design of treatment and attenuation systems, consenting, and project management through to project completion.
- Ensure positive and effective communication with customer and other key stakeholders in the resource management process.
- Ability to work effectively and efficiently and to set and meet appropriate standards and deadlines.
- Respond to issues of possible non-compliance with the District Plan, Resource Management Act 1991, Bylaws and Engineering Standards.
- Capable of explaining technical concepts to non-technical stakeholders and writing detailed reports.

Reporting

- Provide qualified advice and guidance on stormwater matters
- Timely and accurate reports prepared
- Participation in continuous process improvement
- Contribute to the development of Council's policies and strategic direction as they relate to environmental planner
- Establish and maintain Council's database to enable reporting on consent conditions

Customer Service

- Demonstrate a "customer first" culture within the team, and in the wider organisation
- Act as a customer advocate in the team and in the wider organisation
- Actively seek and use customer feedback as an opportunity to improve service
- Develop partnerships within the organisation to meet customer needs
- Contribute to the development of customer focused policies and procedure

Qualifications, knowledge and experience

Essential

- Bachelor's degree or higher in a relevant discipline (Civil Engineering, Environmental Engineering or similar)
- 5-10 years Practical experience in the stormwater industry
- Experience with hydrologic and hydraulic modelling software is highly desirable
- Proven report writing and verbal presentation skills
- Demonstrated ability to deliver on timelines and project milestones
- Demonstrable computer skills in Word, Excel and database applications
- Current driver's licence
- Customer service focus and excellent communication skills
- Experience in writing and reviewing resource consent documentation
- A thorough understanding of subdivision and land engineering requirements supported by at least 5 years relevant work experience

Preferred

- Good technical understanding of stormwater and/or flood protection engineering, including prior design experience.
- Utilities/Three waters background

Personal attributes

- Able to deal with pressure situations and maintain professionalism in a public environment
- Display flexibility to be effective in a dynamic environment, able to re-prioritise and re-organise work as necessary
- Show mental agility and ability to think laterally
- Have a tolerance for ambiguity and change and a willingness to embrace it
- Demonstrate a sense of humour and not take one self too seriously
- Be self-motivated and conduct oneself with drive and initiative
- Have the ability to work in a multi-disciplinary team or alone as needed
- Be an effective communicator both internally and externally and at all levels
- Provide a customer driven approach to problem solving
- Consistently role model the organisation's values

Other requirements

- Demonstrate our values of being professional, supportive, caring and fun
- Demonstrate a customer service ethic, both internally and externally
- Contribute to MDC being a safe and healthy workplace for all our staff and visitors
- If we have an emergency management situation, undertake activities as directed, as part of our MDC response
- Be open to changes in your duties and updates to this job profile as things in the organisation change
- Actively participate in our performance systems and professional development opportunities

Employee
Stormwater Engineer

Date

Hamish Waugh
General Manger - Infrastructure

Date